



POTENTIAL TROPICAL STORM TWO BRIEFING

7:30 AM CDT
Thursday, July 11, 2019

Prepared by:
AMARYLLIS COTTO AND CHARLES ROESELER





Potential Tropical Storm Two

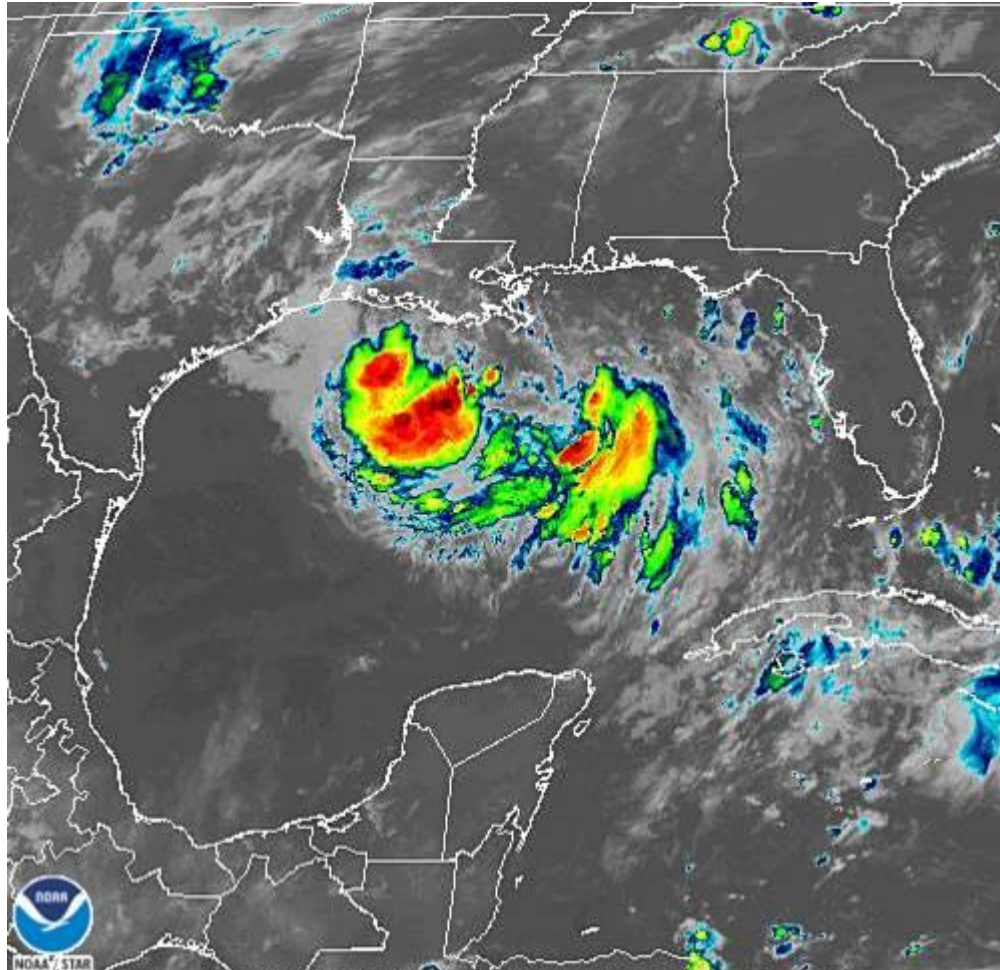
- Tropical depression likely to form over northern Gulf later today.
- Forecast maintains a Louisiana landfall as hurricane Saturday
- USAF planes and observations have yet to 'fix' a center; therefore, the forecast track could have further changes later today and Friday.
- Highly sensitive and offshore interests need to be prepared for sudden changes to the forecast.

Current Satellite View

Potential Tropical Storm Two



Houston/Galveston
WEATHER FORECAST OFFICE



11 Jul 2019 11:46Z NESDIS/STAR GOES-East Band 13

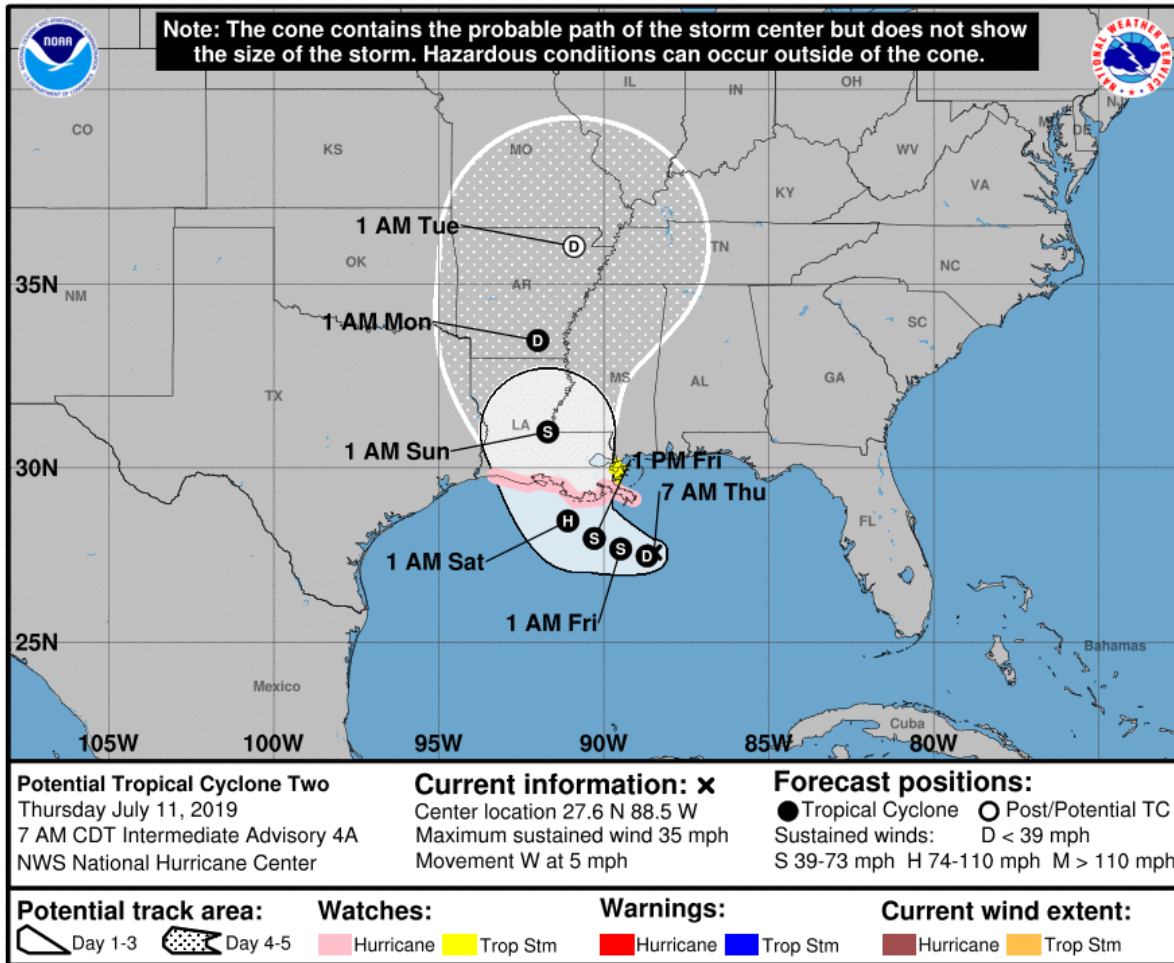
- Convection associated to the low pressure system remains spread out, but better organization is expected later today.
- Recon flights and ship/buoy data have not been able to 'fix' a center.
- Environmental conditions remain favorable for development and a tropical depression is expected to form later today.

Situation Overview

Potential Tropical Storm Two



Houston/Galveston
WEATHER FORECAST OFFICE



- Hurricane watches remains in effect for the LA coast.
- Surge watches remain in effect along the LA coast
- Model track guidance continues to move the system northward early Saturday and into LA on Saturday
- **The track forecast could change, please continue to monitor the development and track of this system**

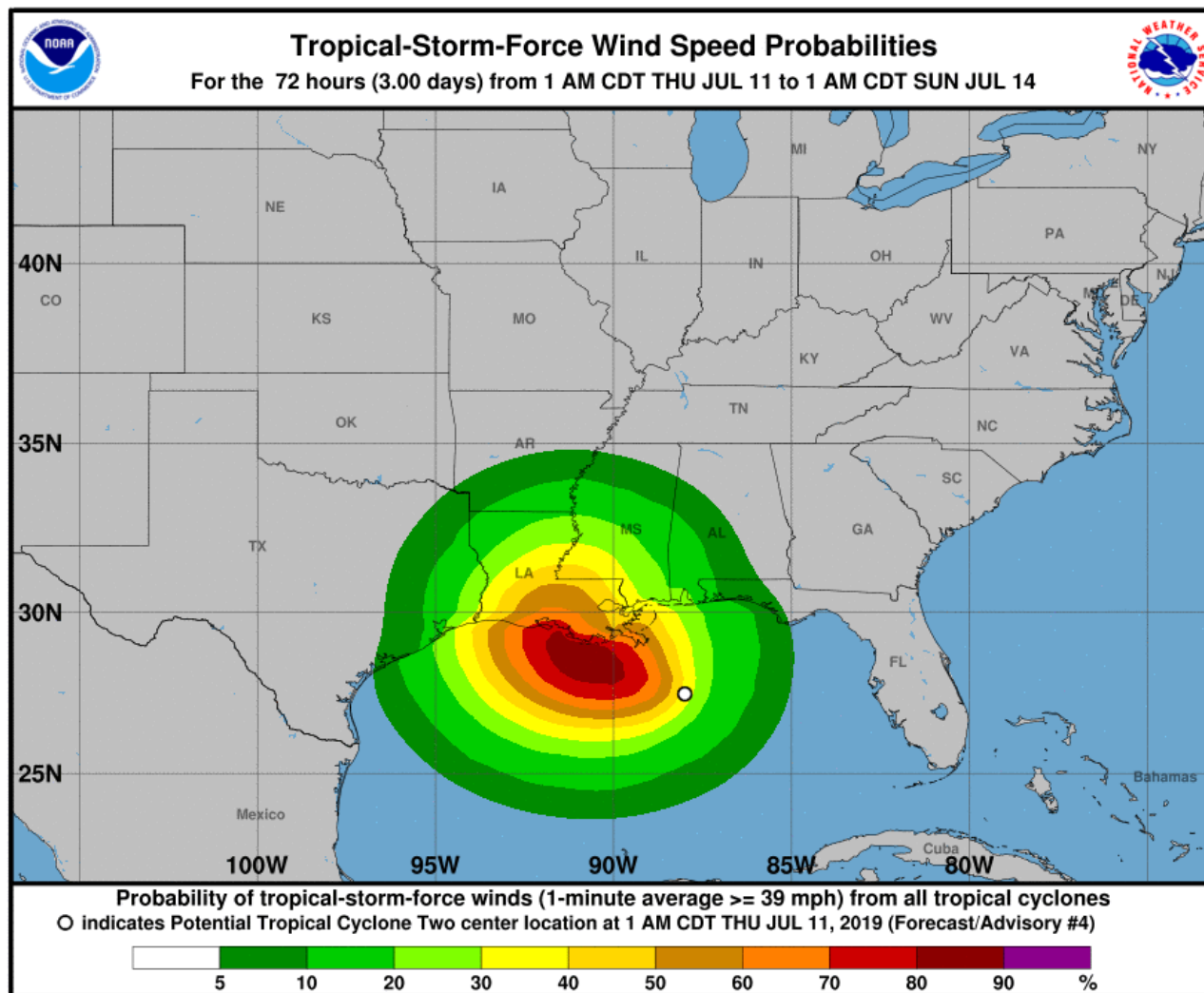
NOTE: *Until a center 'forms' uncertainty remains very high. Don't focus on the track- look at the cone*

Tropical Storm Wind Speed Probabilities



Houston/Galveston
WEATHER FORECAST OFFICE

Potential Tropical Cyclone Two



- 20-40% chance of Tropical Storm force winds (39-73 MPH) over Galveston Bay eastward into the TX/LA boarder.
- Based on the latest NHC advisory, the areas with the highest chance of Tropical Storm force winds remains over LA.
- Tropical Storm conditions could begin as early as Friday
- This forecast is subject to further changes.

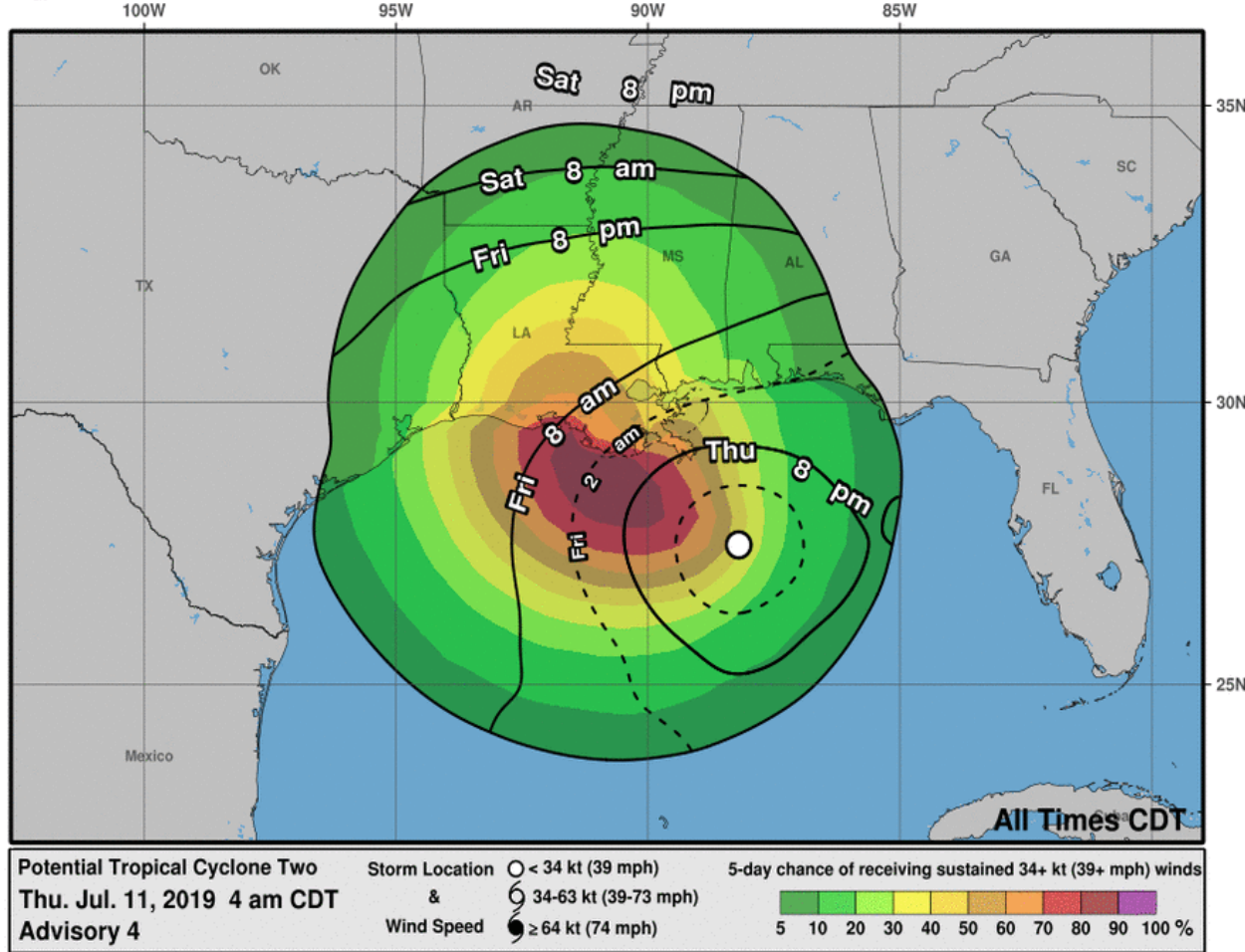
Most Likely Time of Arrival



Houston/Galveston
WEATHER FORECAST OFFICE

Potential Tropical Cyclone Two

0-3 Day Earliest Reasonable Arrival Time of Tropical-Storm-Force Winds



- The most likely time of arrival of Tropical Storm Force Winds for Southeast TX would be Friday afternoon/night.

Expected Rainfall

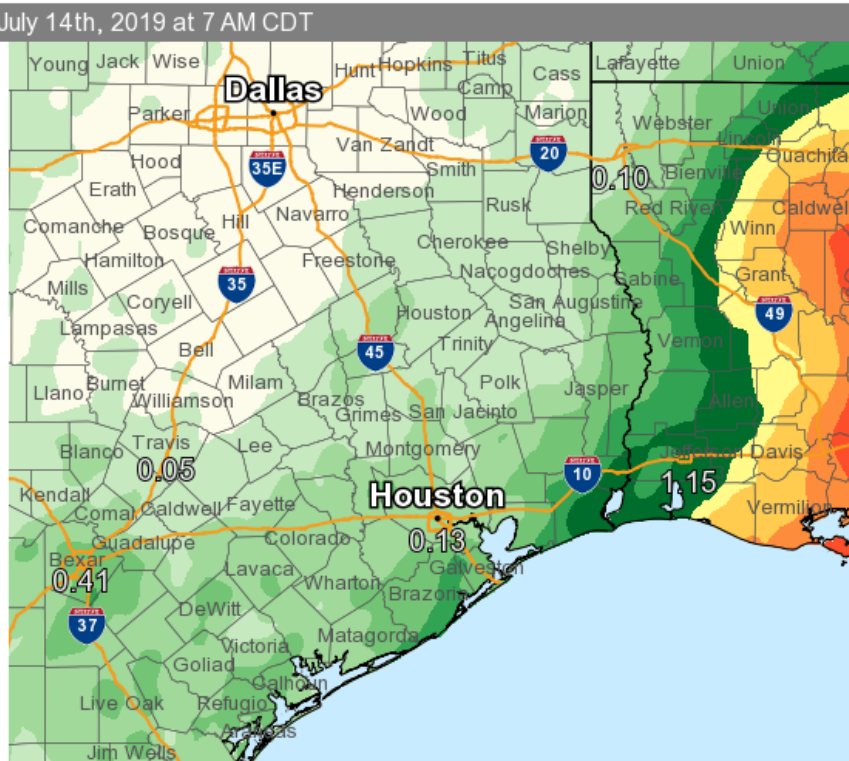
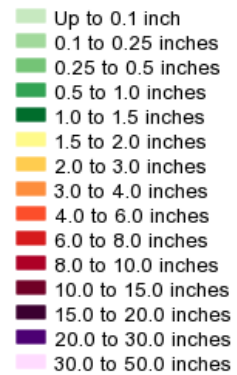
Potential Tropical Storm Two



Houston/Galveston
WEATHER FORECAST OFFICE

Forecast Precipitation

Valid Ending Sunday July 14th, 2019 at 7 AM CDT



Graphic Created
July 11th, 2019
7:26 AM CDT

- Not much change today with QPF given the continued track into LA.
 - If anything a slight shift east in track has reduced totals slightly.
- **Highly dependent on storm track**
- **Expected Rainfall**
 - Heavier amounts east of I-45
 - Lower amounts west of I-45



Potential Tropical Storm Two

- **Tropical depression will likely develop** over northern Gulf later today.
- While current forecast is for a Louisiana hurricane landfall Saturday, which keeps most impacts east of us, ***we need to watch carefully!***
- This **would be a short-lead time event** if the system fails to turn north into LA.
- Highly sensitive and offshore interests need to **be prepared to act quickly** if the track changes.
- Marine and offshore interests in particular, even with a southwest LA landfall, there is a chance of 20-40 mph winds offshore as early as late Friday.